



AMCL – A Solution Provider and Profit Optimizer



AMCL Machinery Limited

# BLADDER CURING PRESS



Technology Sourced from World Leaders



**AMCL MACHINERY LIMITED**  
(HNGIL Group of Companies)

## Operation

1) The HB type presses have been designed especially for manufacturing and curing the bladders used in the AUBO, BOM and AUTOFORM presses.

2) The control of the Hydraulic system included in the equipment is designed such that the lower mould half carrying the uncured rubber approaches the upper mould half with high velocity during the first closing stage. Thereby, the total closing period is reduced to minimum.

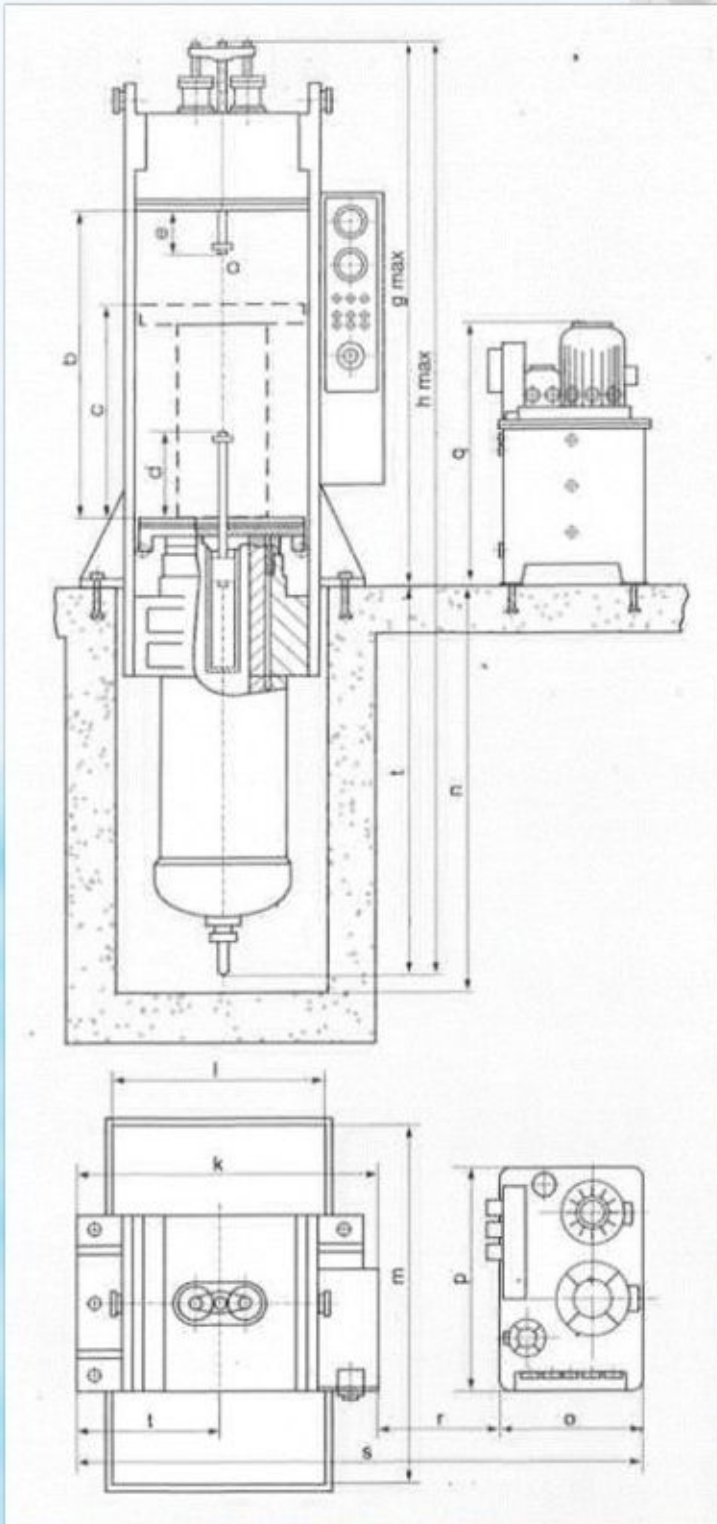
3) In the beginning of the pressing operation the closing speed is slackened automatically in order to obtain slow and uniform compression of the uncured material. After lapse of the curing time, the press opens automatically and the bladders for AUBO and BOM presses are removed from the lower core plate. The bladder for AUTOFORM presses is detached by means of a pneumatic device which can be included in the delivery package on specific order.

4) The two external mould portions and the core are cured by a direct steam connection.

5) The press along with the hydraulic power unit is delivered in a "ready for connection" condition, excluding curing platens. The timer/PLC for automatic press opening after completion of the curing period as well as the steam / condensate piping are normal features of supply

### Optional Item

1) Bladder Moulds - The moulds are manufactured according to customers drawings using high grade steel.





AMCL Machinery Limited

## AMCL – A Solution Provider and Profit Optimizer



TECHNICAL DATA	MODEL NO			
	HBV		HB-4	HB-6
MOULD RANGE FROM 12" TO	MOTOR-CYCLE	11.00-20*	12.00-24*	18.00-24/25
MAXIMUM MOULD HEIGHT (MM)	250	750	850	1300
MINIMUM MOULD HEIGHT (MM)	100	450**	550**	500
CLOSING PRESSURE (TONS)	300	450	450	600
OPERATION PRESSURE (ATM)	250	250	250	180
ELECTRIC POWER	10	10	10	80
APPROXIMATE WEIGHT OF PRESS & PUMP (KGS)	7000	9200	12000	38000
APPROXIMATE CLOSING SPEED H.P. (MM/MIN)	100	66	66	36-336
APPROXIMATE CLOSING SPEED L.P.(MM/MIN)	1000	1000	1000	1400-1700
DIMENSIONS a	820	860	960	1450
b	735	1700	1800	3000
c	645	1250	1250	2500
d	270	480	680	850
e	200	330	520	850
f	800	1970	1710	3900
g	2350	3200	3600	5320
h	3150	5170	5570	9220
l	800	900	900	1450
k	1500	1600	1660	2670
l	650	1140	1200	1200
m	1820	1900	2000	3400
n	1000	2100	2300	4200
o	800	1000	1000	1250
p	1200	1400	1400	1850
q	1400	1100	1100	1860
r	700	800	800	800
s	3000	3400	3460	4720
t	650	730	780	1175
<b>REQUIRED MEDIA</b>				
INTERNAL AND EXTERNAL CURING	STEAM UP TO 16 ATM			
ELECTRIC POWER	220 / 415 VOLTS, 50 CYCLES			
ACCESSORIES	BLADDER MOULDS			

In view of continuous development the information given herein is likely to change without prior notice.



## Constructional Features

- 1) Side shields with cross bridge assembly
- 2) Complete Hydraulic piping between Power pack and press connecting individual cylinders
- 3) Temperature recorder/Controller
- 4) Main cylinder for Press opening / closing, Core cylinder, Ejector cylinders



## AMCL's Range of Rubber, Tyre & Tube Machinery

- Mixtron BB Series Mixers
- Mixing Mills
- Hot Feed Extruders
- Calender with line equipment
- Bias Tyre Building Machines
- Bladder Curing Presses
- Tyre Curing Presses  
Aubo Type, Curex B Type
- Tube Curing Presses
- Tube Splicing Machines
- Semi Auto/Auto PCI Units
- Servicers for Tyre Building Machines

Yesterday's Pioneer...Today's Leader

For over four decades, AMCL has been turning the wheels of the Indian Tyre Industry, sourcing advance solutions from World leaders like Leonh Herbert Maschinenfabrik, Germany; Midland Tyre Machinery Co. Ltd., U.K.; Kobe Machinery Co. Ltd., Japan, and KOBE STEEL LTD., Japan. Recognized as the Pioneer in Rubber and Tyre machinery in India, AMCL shall remain the expert one stop source for all requirements of the industry. It stands committed to provide innovative technology advances to the emerging needs of its valued Customers.



Works at Nagpur



## AMCL MACHINERY LIMITED

**Corporate Office:** 2, Red Cross place (HNGIL), Kolkata – 700001, WB  
**Head. Office:** 202, Ackruti Centre point, MIDC, Andheri (E), Mumbai-400093  
**Works:** A-1/1, MIDC, Butibori - 441 122, Dist. Nagpur, Maharashtra, INDIA.  
**Phone :** 91 - 7104 - 265470, 265724 Fax: 91-7104 -265725,265893  
**Website:** www.amcl.in **E-mail:** marketing@amcl.in